

# Activity System for WebCMS3



Costa Paraskevopoulos

[c.paraskevopoulos@unsw.edu.au](mailto:c.paraskevopoulos@unsw.edu.au)

# WebCMS3 - The Old Quiz Module

- Only multiple choice questions
- Minimal statistics for staff
- Virtually no feedback for students
- Some interfaces were inconsistent
- Too many bugs
- Missing many desirable features

# WebCMS3 - Improvements to Quizzes

- Only multiple choice questions
  - Now supports five question types
- Minimal statistics for staff
  - Many enhancements made to the statistics page
- Virtually no feedback for students
  - Automatic solutions
  - Mark breakdowns
  - Custom question explanations
- Some interfaces were inconsistent
  - Every page design has been improved in some form, maximizing usability
- Too many bugs
  - All known bugs fixed
- Missing many desirable features
  - Extensions, late penalties, importing activities, importing questions, viewing/downloading submissions

# WebCMS3 - The New Quiz Module

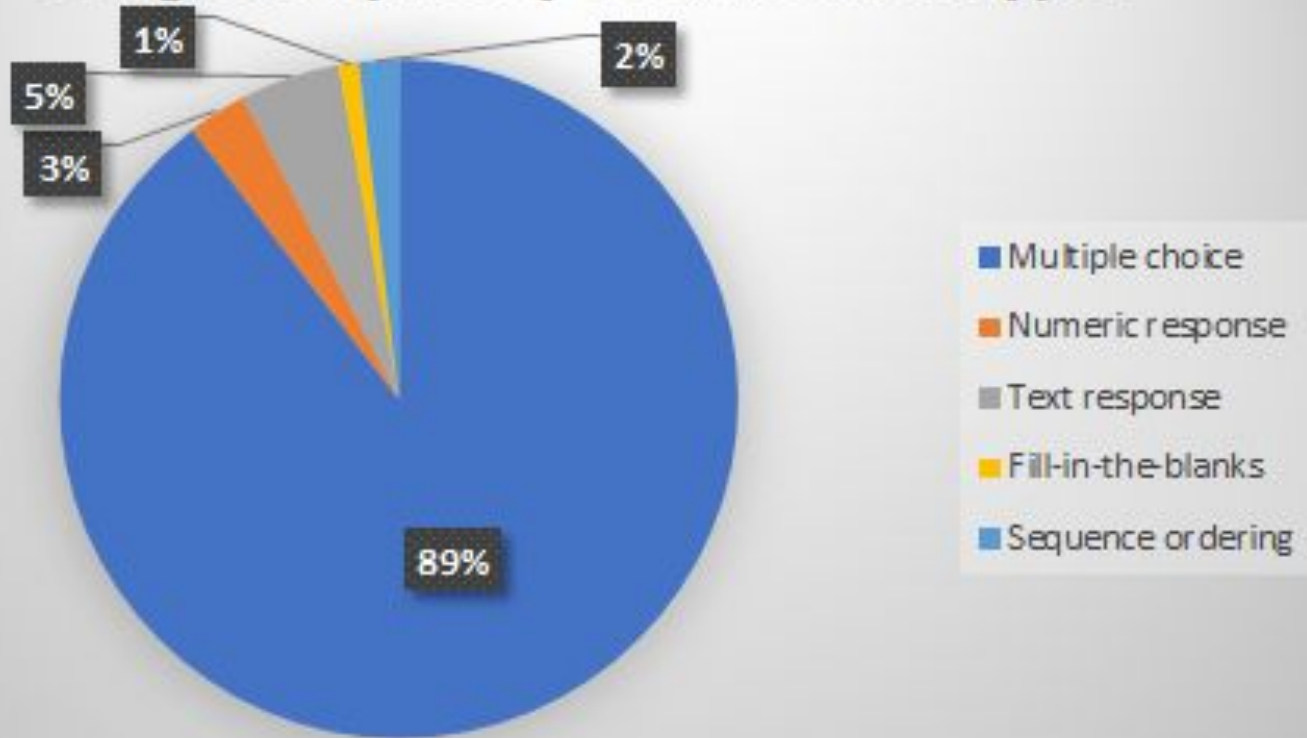
- Live demo
  - <https://webcms3x.cse.unsw.edu.au/DEMO1111/19T3/>

# WebCMS3 - Usage Statistics

Courses using polls	6
Total number of polls	18
Number of poll responses	2807
Courses using quizzes	11
Total number of quizzes	38
Number of quiz responses	7349
Quizzes with a description field	6
Quizzes enabling late penalties	2
Number of late quiz submissions	4
Number of student extensions granted	8

# WebCMS3 - Usage Statistics

## Usage Frequency of Question Types



# WebCMS3 - Real Quizzes Run in Production

- Used by 11 different courses in 19T3
- Some examples:
  - <https://webcms3.cse.unsw.edu.au/COMP9020/19T3/activities/quizzes/1409>
  - <https://webcms3.cse.unsw.edu.au/COMP9020/19T3/activities/quizzes/1427>
  - <https://webcms3.cse.unsw.edu.au/COMP9020/19T3/activities/quizzes/1453>
  - <https://webcms3.cse.unsw.edu.au/COMP3311/19T3/activities/quizzes/1446>
  - <https://webcms3.cse.unsw.edu.au/COMP3311/19T3/activities/quizzes/1464>
  - <https://webcms3.cse.unsw.edu.au/COMP6445/19T3/activities/quizzes/1435>

# WebCMS3 - Performance Issues

- Experienced by some staff within the first five weeks
- Fast response to implement patches
- Main issues raised:
  - Loading quiz statistics for many student responses
  - Editing large quizzes
  - Only tested early in development
  - Now tested with test a quiz containing 40 questions and 1000 responses



# WebCMS3 - Usability Issues

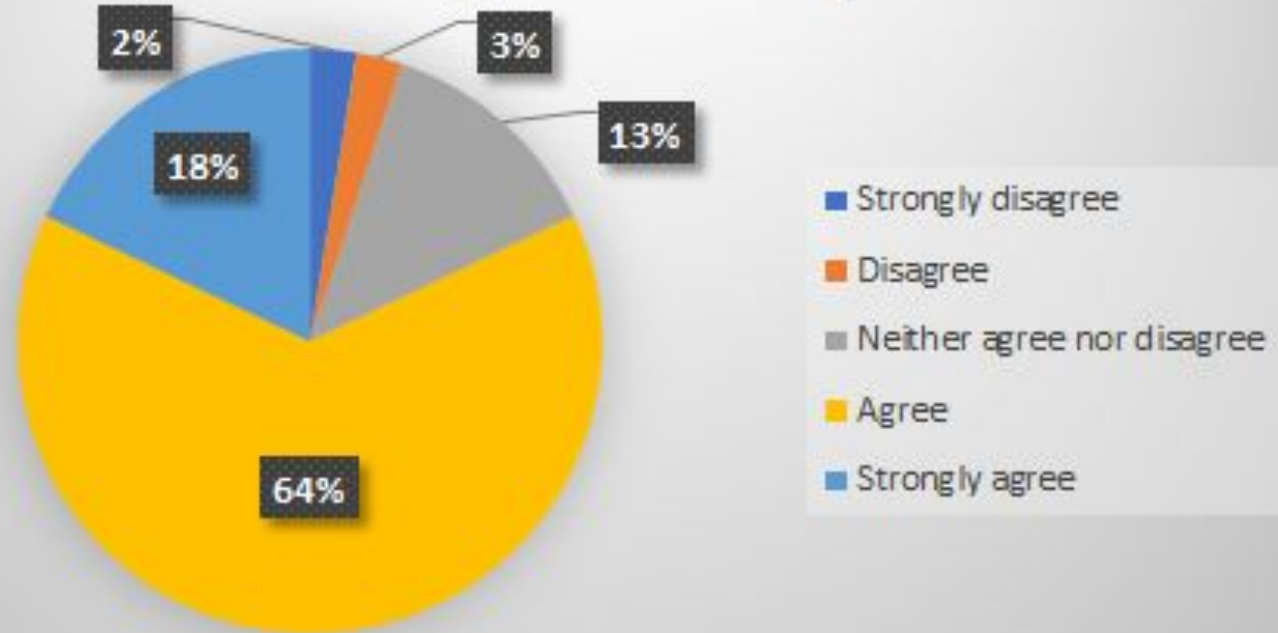
- Structured scenarios carried out during Week 6 and 7
  - Five members of CSE staff
  - Two non-CSE staff (had not used the system previously)
- Scenarios:
  - Creating a new quiz
    - Adding questions of various types
  - Viewing quiz results
  - Editing an existing quiz
    - Tweaking options and questions
    - Importing questions
  - Importing activities
  - Sitting a quiz

# WebCMS3 - Survey Results

- Staff survey
  - Few responses; difficult to draw useful insights
- Student survey
  - Sent to COMP3311 and COMP9020 students
  - Many more responses
- Conclusions:
  - More feedback
    - Depends on lecturers adding custom explanations
  - Multiple resubmissions
    - Currently up to the lecturer

# WebCMS3 - Survey Results, Extract

Do you feel that the range of question types was helpful?



# WebCMS3 - The Future

- Support for more question types
- Question and/or response randomization
- Uploading from a file
- Finer control over visibility and deadlines
  - Tutors
  - Individual classes

**Thank you**  
(and enjoy using the new system)

**Questions?**